

MPS Catalog Number:

S1 90 80 037 MA AL 023

Date:

01/24/2014

END FITTINGS

Tower End Fitting:

Eye (Forged Steel)

Line End Fitting:

Ball (Forged Steel) (ANSI 52-5)

MATERIAL

Corona Ring (Tower):

None

Corona Ring (Line):

8" Corona Ring

Corona Rings are recommended for applications of 230 kV and above

Number of Sheds:

11 large 12 standard

Rod Diameter:

16 mm

Weight Estimate:

10.7 lbs 4.9 kg

DIMENSIONAL VALUES

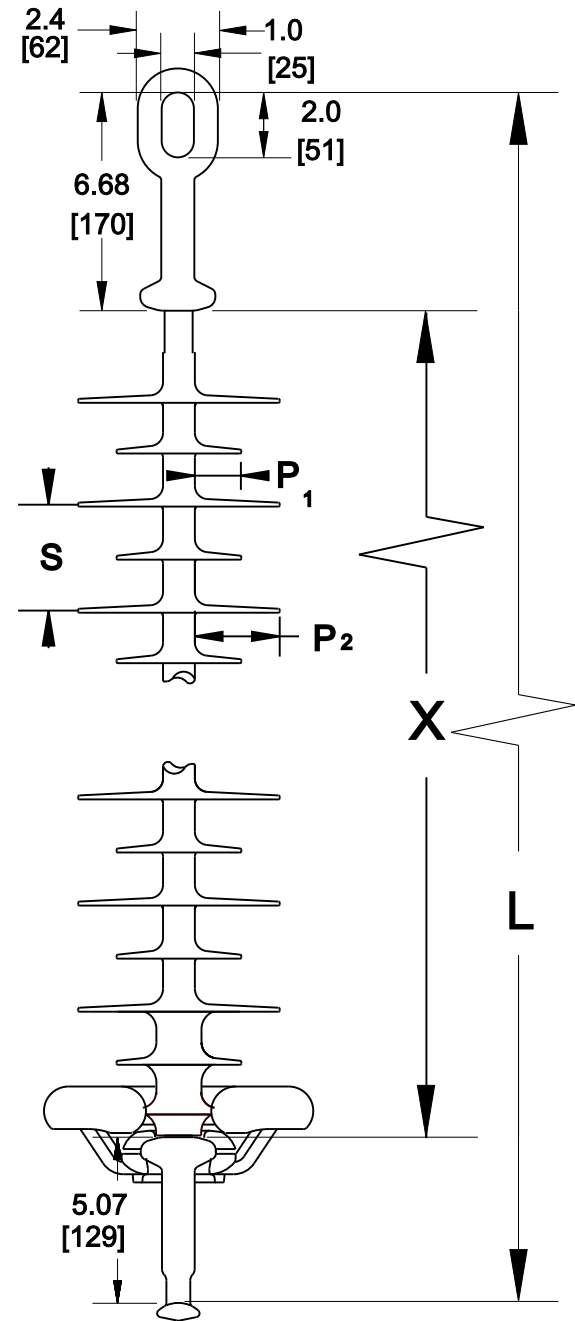
Section Length (L):	48.3 in	1,227 mm
Rubber Length (X):	36.6 in	930 mm
Standard Shed Height (P1):	1.5 in	38 mm
Large Shed Height (P2):	2 in	51 mm
Projection Ratio (S/P):	-	1.5
Shed Spacing (S):	3 in	76 mm
Dry Arc Distance:	36.2 in	919 mm
Leakage Distance:	103.5 in	2,629 mm

ELECTRICAL VALUES

60 Hz Dry Flashover:	359 kV	Min. Withstand:	334 kV
60 Hz Wet Flashover:	324 kV	Min. Withstand:	282 kV
Pos. Critical Impulse Flashover:	621 kV	Min. Withstand:	535 kV
Neg. Critical Impulse Flashover:	662 kV	Min. Withstand:	580 kV

MECHANICAL VALUES

Specified Mech. Load (SML):	25,000 lbs	111.2 kN
Routine Test Load (RTL):	12,500 lbs	55.6 kN



This drawing contains confidential information that is property of MacLean Power L.L.C ('MacLean'). Use of MacLean's confidential information without MacLean's express written consent is strictly prohibited and may expose you to legal liability. If you believe that you received this material in error, please destroy it or return it to 'MacLean Power, L.L.C., 7801 Park Place Rd, York, SC, 29745, USA.'

Dimensions: inches [millimeters]

Note: Drawing not actual depiction of insulator appearance

Silicone Rubber Sheath & Sheds
Complies with applicable ANSI and IEC standards.